

ACCESSIBILITY & ENVIRONMENT



A&E FILM FESTIVAL SHOWCASE

ARNOLFINI

01 MARCH 2025, 13:30 - 21:00

Feature & short documentaries, comedy, animations and experimental films on disability issues and the environment.

www.aneff.org.uk





1:30pm INTRODUCTION

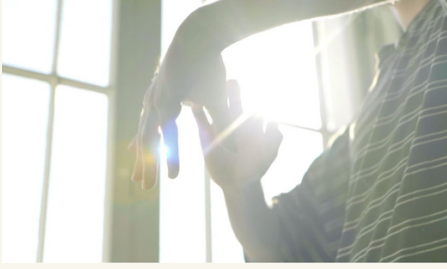
Brief introduction to the A&E Accessibility and Environment Festival project (with sign language interpreter).



2:00pm MOVEMENTS

Comedy, dance, animation and documentary shorts about identity, diversity & ways of healing.

Programme length: 1h 41m



Dolls

A coming of age comedy, set in the early 00s, Cherry is faced with a collection of judgemental porcelain dolls as she explores her transition into sexual maturity.



Unbound

A lively and colourful abstract animation presenting the filmmaker's feelings about being perceived as 'wheelchair bound'



Autistic Joy

A micro short poetry film exploring the side of autism that often goes unspoken and under-explored: the joyful.

Pripyat Horse

Short experimental animation. A moment for mourning, for a friend, for the earth.



Picturing Wonderland

An experimental snapshot of the experience of living with a degenerative blindness.

About Us

We are deaf. Video poem. Physical expression using the body cultivated through sign language. The physical expressions of deaf elderly people are especially beautiful.



Traveling Light

A short dance film celebrating performers with disabilities, reveals the language of movement as a profound form of communication.



Crip/Mad Archive Dances

How do disabled and mad people survive, dance, insert their differences in a world full of stigma?



4:00pm SPIRITUALITY, SUSTAINABILITY & SYMBIOSIS

Short and Feature documentaries offering a unique insight on burning environmental issues.

Programme length: 2h 31m

Rising Tides, Raising Voices

Faced with the urgency of increasing disasters, disabled grassroots activists across the Pacific are championing disability-inclusive climate action.

Guardians of the Rainforest

Amazon, Congo Basin, Borneo. A journey across rainforests. A collective song of Indigenous women's voices as they share their stories,

Burnt Country

Could Australia's past help secure its future? 65,000 years in the making, Burnt Country is about fighting fire, with fire - exploring the profound knowledge and wisdom of First Nations.

Whale Wash - The Forgotten Whale

An ESPA maritime investigations team pursues Norwegian whaling vessels at sea and films the unethical hunting methods. The film uncovers the dark truth about modern whaling.



7:00pm RESILIENCE

Testimonies of resistance against the odds.

Programme length: 1h 26m

Oluwale

The first documentary to explore the story of David Oluwale, a Nigerian immigrant chased or thrown into the River Aire by Leeds Police in 1969.

Invisible Life

An observational documentary that portrays the daily lives of visually impaired individuals in a provincial city in Russia.



Ok, I will trust your word.

Some of the organisations that we are supporting or have supported us

National Survivor User Network, (NSUN) is a network of people & groups with lived experience of mental ill-health, distress and trauma. NSUN works to shift power and resource in mental health

Bristol Independent Living (BRIL) is a Bristol based community group run by and for disabled people. Disabled people include those with physical impairments, neurodivergent people, people living with chronic illness and people who experience mental distress.

BRIL aims to campaign for equality and inclusion for all disabled people and to promote the principle of 'Independent Living' as we define it. BRIL also offers peer support to disabled people in Bristol via our regular online meetings.

Fuel Poverty Action (FPA) is a UK-wide, grassroots organisation which campaigns to prevent fuel poverty and climate disaster. We challenge rip-off energy companies and unfair policies that leave many people choosing between heating and eating. We take action for warm, well-insulated housing and clean and affordable energy, under the control of people and communities, not private companies. We are lobbying hard for 'Energy For All', a plan to speed up the phase-out of oil and gas while ensuring everyone can meet their essential energy needs.

www.fuelpovertyaction.org.uk

X @FuelPovAction

fb & Insta @fuelpovertyaction

[fuelpovertyaction.bsky.social](https://bsky.app/profile/fuelpovertyaction.bsky.social)

WECIL is an award winning, user led organisation supporting Disabled people to live the life they choose.

Cinema for All is the national charity for the support and development of community cinema, helping more than 1600 community cinemas and film societies across the UK.

Whether you have been screening films in your community for many years, or are just thinking about setting up, Cinema For All can support you along every step of your journey.

Bristol Seed Swap brings people together to exchange seeds, promote food growing, community seed saving and encourage resilience in our food system. Join our Seed Guardian Programme to protect the diminishing heritage seeds and conserve seed diversity."

Bristol Climate & Nature Partnership

This next film is a short animation of an inclusive transport vision for Bristol. The vision was co-created by people from communities across the city as part of Bristol Climate & Nature Partnership's National Lottery funded Community Climate Action Project.

bristolclimatenature.org

Bristol and South Glos Young Carers work to support children and teenagers 5-17, across both counties who provide care to family members. We aim to give young carers a break from their responsibilities, to connect with each other, to build confidence and skills, and to support them in their education.'

aneff.org.uk



HEADFIRSTBRISTOL.CO.UK



EST. 1961